



Evaluation Boards and Kits

Evaluation Options

Our evaluation kits are designed so that our sensors can be easily and rapidly evaluated with least amount of effort. The kits are developed as shields for the common Arduino platforms (Uno and Mini).

Our high-quality kits, designed and assembled in the US, contains

1. Surface-mount sensor packages on a small sensor PCB board with header pins
2. Housing for air sampling
3. Shield for Arduino platform
4. Additional Bluetooth or WiFi connectivity is available.

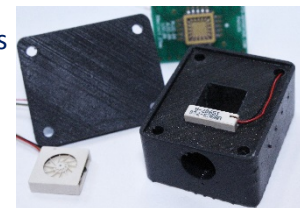
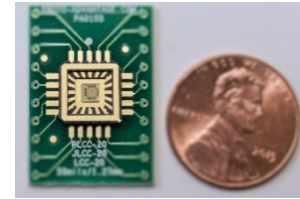
We offer different options for you to configure your evaluation kit.

Configurations

Sensor Type	Single Gas	Dual Gas
-------------	------------	----------

Sensor Package Type	24 pin Ceramic DIP	20 pin Ceramic LCC	16 pin plastic QFN
---------------------	--------------------	--------------------	--------------------

Evaluation Board Configuration	Shield for Arduino UNO	Shield for Arduino Mini	Complete single board kit using Arduino Mini
--------------------------------	------------------------	-------------------------	--



Sensor Calibration Data

If your application demands sensors with laboratory calibration, we can provide calibration data for the specific sensor device.

Software and Data Visualization

Code using Arduino IDE for Arduino Uno and Arduino Mini is available that will enable full functionality of the board.

Technical Support

Our dedicated team of engineers will help you configuring your development kit to suit your needs. We are ready to provide support so that you can develop your next application using our sensors.

Talk to us about your custom evaluation kit needs!

N5 Sensors Inc.

9610 Medical Center Dr., Rockville MD, 20874

Phone: +1 (301) -257-6756

Email: info@n5sensors.com

Website: www.n5sensors.com